

# WALL MOUNT

## WALL MOUNT SL SERIES

### FEATURES

Adjustable Unistrut allows for mounting on almost any wall

Comes with Channel Nut connection of Pedestal to Wall mounted Unistrut

Allows for easy modification of height of pedestal on wall

Entire unit made of Aluminum, keeping it lite for handling and installing

Meets NEMA 3R rating.

Supplied hardware to allow for easy adjustment of unit on wall

Only require a concrete drill, wrenches and a level to complete installation

### CONSTRUCTION

U-Channel mounted to back of SL Series Pedestals

Adjustable 5 Hole "U" fitting Unistrut to mount on wall

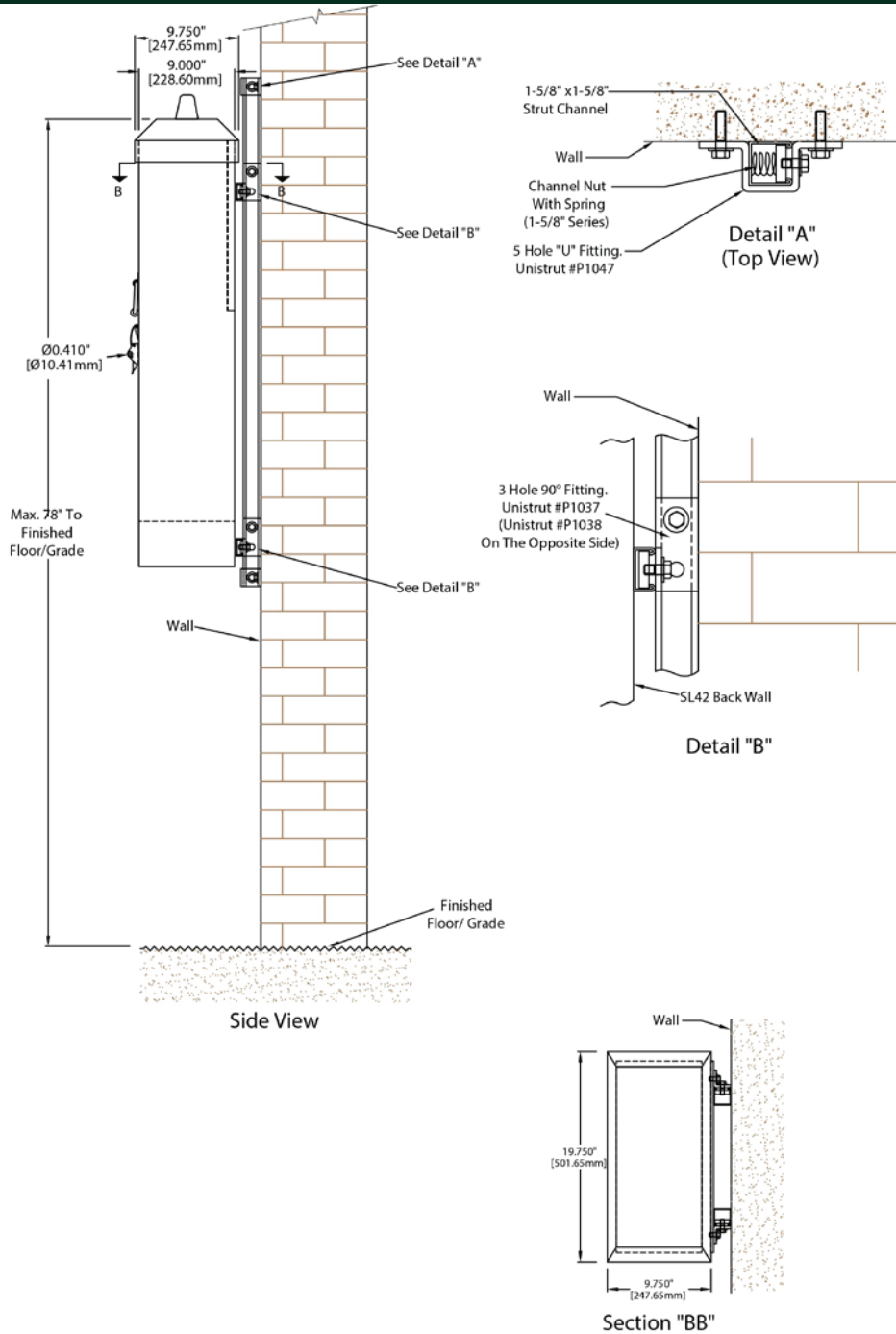
Bottom plate supplied with punched knockouts

Weather-head can be added to side of Pedestal



Proudly Canadian





## Wall Mounted

### Materials Notes For SL42:

Enclosure Mat]-  
10 gauge (0.100") thick aluminum sheet metal

Paint Colour:  
Byers-Bush Jet Kote BB510GR Electrostatic powder coat finish

# WALL MOUNTED



**PEDESTAL SOLUTIONS INC.**  
6552 Ravenshoe Road, Unit #6  
Sutton West Ont. L0E 1R0  
Tel: (905) 715-2056  
info@pedestalsolutions.com

TITLE:  
SL42 FOR BIONEST SEPTIC CONTROLS  
POST AND WALL MOUNTING DETAILS

DRAWN BY HT	PART NO. -
CHECKED BY -	DWG NO. -
SCALE NONE	
	REVISION A
DATE JANUARY, 2021	PAGE: 3 OF 3